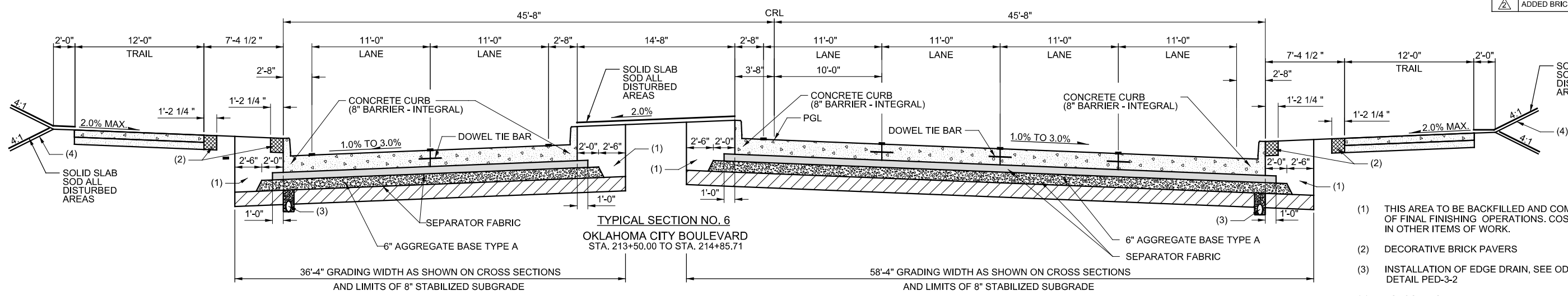


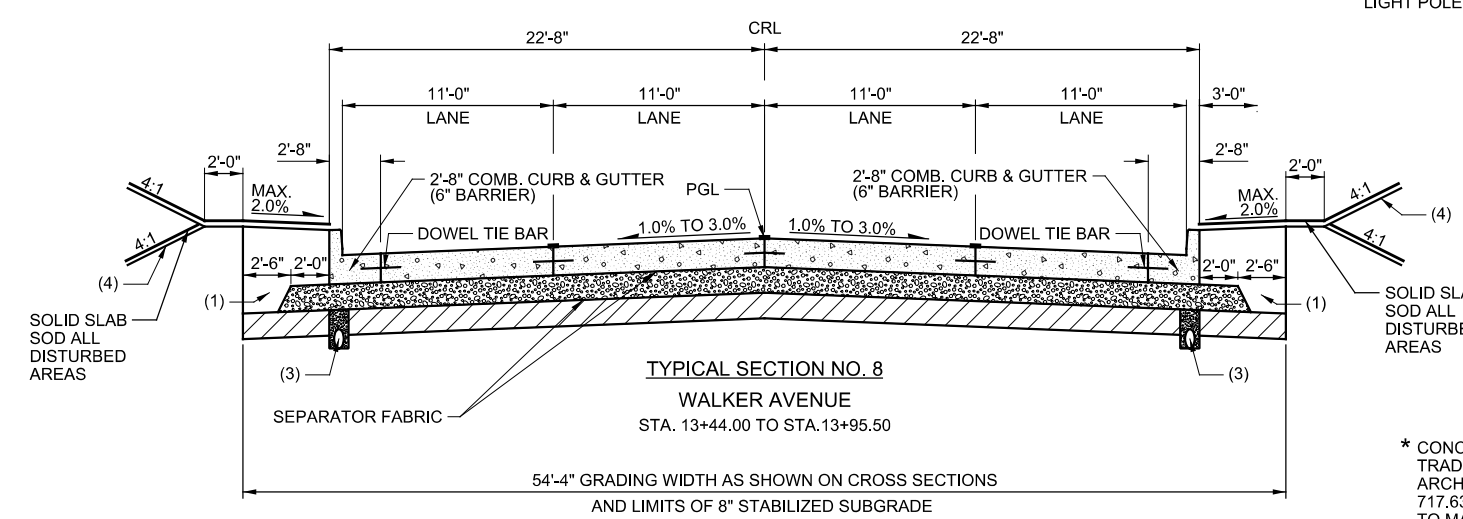
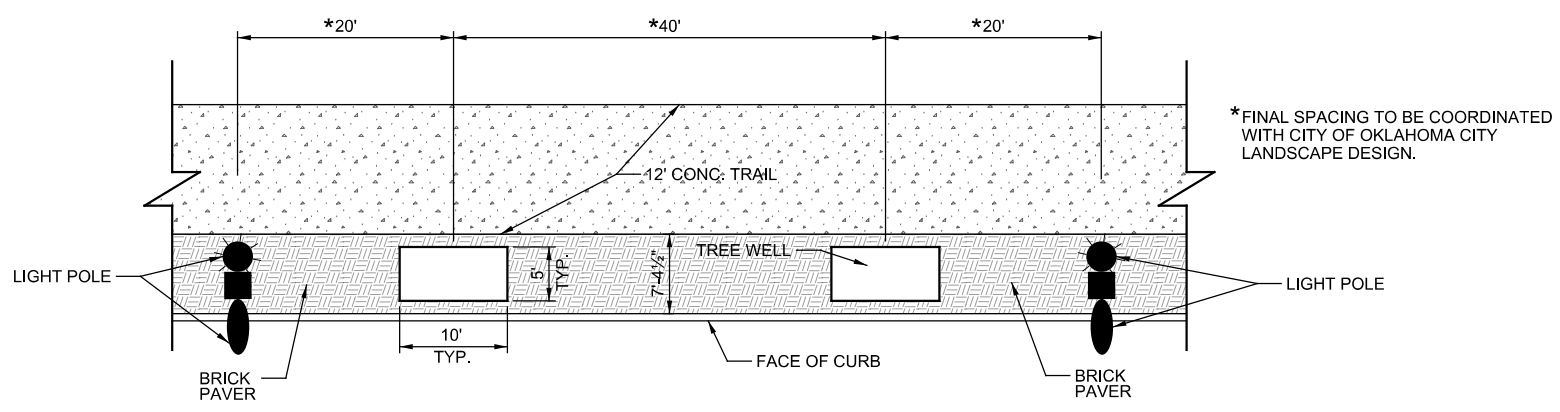
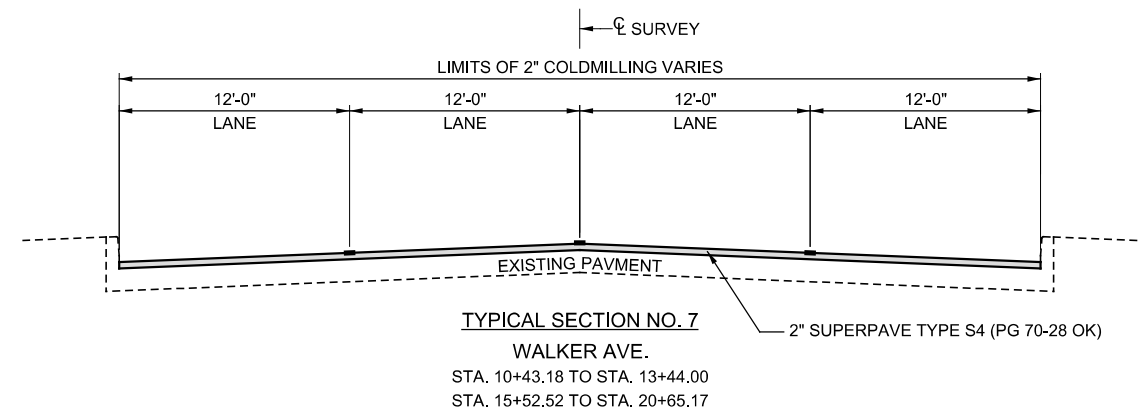
REVISIONS		
REV. NO.	DESCRIPTION	DATE
△	ADDED BRICK PAVER DETAIL AND LAYOUT	12-21-2015
△	ADDED BRICK PAVER COLOR	3-15-2016



PAVT. STRUCTURE	DRIVING/PARKING LANES	TRAIL
SURFACE COURSE	9" DOWEL JOINTED P.C. CONC. PAV.	6" CLASS A P.C. CONC.
BASE COURSE	4" CEMENT TREATED BASE	4" AGGREGATE BASE TYPE A

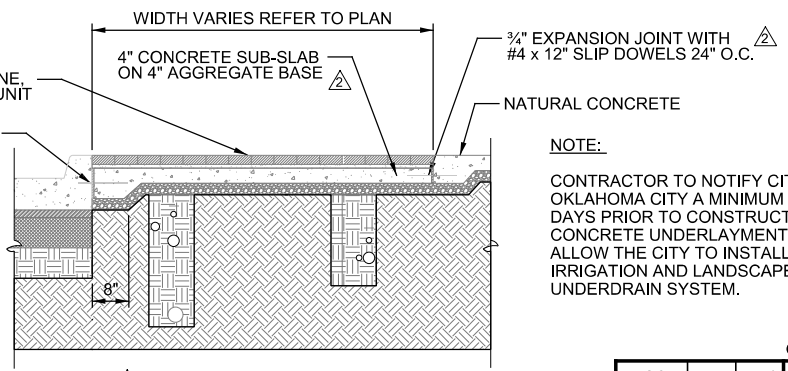
- (1) THIS AREA TO BE BACKFILLED AND COMPACTED AS PART OF FINAL FINISHING OPERATIONS. COST TO BE INCLUDED IN OTHER ITEMS OF WORK.
- (2) DECORATIVE BRICK PAVERS
- (3) INSTALLATION OF EDGE DRAIN, SEE ODOT STANDARD DETAIL PED-3-2
- (4) TOPSOIL NOTE:
THE CONTRACTOR SHALL STRIP ALL OF THE AVAILABLE TOPSOIL, STOCKPILE IT, AND PLACE IT BACK ON THE SECTION IN ACCORDANCE WITH SECTION 205 OF THE STANDARD SPECIFICATION. RESERVED TOPSOIL SHALL BE SPREAD APPROX. 5" THICK FIRST ON THE COMPLETED SLOPES OF THE CUT SECTIONS AND THE REMAINDER ON COMPLETED FILL SLOPES OR OTHER PRIORITY AREAS LOCATED BY THE ENGINEER. ALL ADDITIONAL COSTS ASSOCIATED WITH OPERATION SHALL BE INCLUDED IN THE PAY ITEM FOR TYPE A SALVAGED TOPSOIL, LUMP SUM.

THE GRADING LINE AS SHOWN ON THE TYPICAL AND CROSS SECTIONS IS TO THE TOP OF THE TOPSOIL. EARTHWORK QUANTITIES WERE NOT ADJUSTED FOR SALVAGE AND THE TOPSOIL QUANTITY IS INCLUDED IN THE EARTHWORK SUMMARY.



PAVT. STRUCTURE	DRIVING/PARKING LANES	SIDEWALK
SURFACE COURSE	9" DOWEL JOINTED P.C. CONC. PAV.	4" CLASS A P.C. CONC.
BASE COURSE	8" AGGREGATE BASE TYPE A	4" AGGREGATE BASE TYPE A

* CONCRETE UNIT PAVER, 6" x 12" x 2 3/8", TRADITIONAL SERIES, HANOVER ARCHITECTURAL PRODUCTS 717.637.0500 OR PAVE STONE EQUAL TO MATCH OKLAHOMA CITY PROJECT 180 MATERIAL.
△ (COLOR TO BE 75% B9-1428 WITH 25% CHARCOAL, BLENDED)



NOTE:
CONTRACTOR TO NOTIFY CITY OF OKLAHOMA CITY A MINIMUM OF 7 DAYS PRIOR TO CONSTRUCTING CONCRETE UNDERLAYMENT TO ALLOW THE CITY TO INSTALL IRRIGATION AND LANDSCAPE UNDERDRAIN SYSTEM.

DESIGN	KBA	MMPC
DRAWN	ISFM	RWH
CHECKED	MM	
APPROVED		
SQUAD	MacArthur	

OKLAHOMA CITY BOULEVARD OKLAHOMA CO.
OKLAHOMA DEPARTMENT OF TRANSPORTATION
TYPICAL SECTIONS (3)
STATE JOB NO. 17428(89) SHEET NO. 4

PRINT DATE: 3/15/2016 T:\1024\06\Drawings\Roadway\1024-06-TYP-03-conc.dgn